

Programming software
TwidoSuite
And everything becomes *clear*



Simply Smart!

Leveraging
ingenuity
and intelligence
for **ease of use**

TwidoSuite programming software

A **new way of working**,
quite simply... **yours!**

- Because you have little or no time to devote to learning or using programming software, Schneider Electric has created **TwidoSuite**.
- More than just programming software, **TwidoSuite** is designed to assist you in developing projects that utilize Twido controllers.

Simply smart

Resulting from a study relating to ergonomics,

TwidoSuite has been developed to assist and simplify all your operations with the aim of significantly reducing development time.



Software that works the way you do!

The first programming software that is **organised according to the development tasks** of your project, **TwidoSuite** offers you navigation that is so easy to use that it becomes second nature!

A modern style!

Discover a truly **modern interface** that is simple and intuitive, making implementation more user-friendly, quicker and more efficient.

Work cleverly!

- Faster: in the blink of an eye locate the information that you require due to a **simplified interface**.
- More efficient: thanks to the numerous tools and **tips** offered.



Instinctive and very visual navigation

1 An optimized presentation that offers only the tools required

Simply select the development stage of your project in which you wish to work and **TwidoSuite** offers the appropriate tools.

2 A task oriented environment that avoids any oversight

The software itself suggests the tasks to be performed within the selected development stage: an additional assurance that nothing will be overlooked.

3 A no-nonsense working zone for better clarity

The generous on-screen workspace helps you organize and track selected tasks, without superfluous information.

Full compatibility

TwidoSuite assures worry free continuity of your applications previously created using TwidoSoft.

4 Complimentary information in the blink of an eye

A separate zone in the workspace allows you to activate complementary tools for the selected task.

5 Permanent help

Basic functions are permanently accessible to help you to navigate and easily access information.

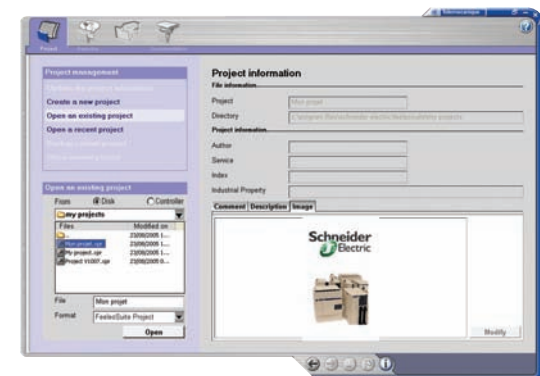


1 Project

- Manage your projects in a user-friendly manner: easily create a new project, or open a project from your PC disk or directly from your PLC.

Tip

To save time: select your projects and review their essential information even before opening them.



2 Description

- Find work more enjoyable due to visual quality. Graphical description of Twido hardware as well as its communication context (with HMI, variable speed drive... via CANopen, Modbus, Ethernet... fieldbuses and networks).

Tip

Automatically place an object within the working zone from an illustrated product catalog via Drag & Drop.



4 Program exploration

- Improve comprehension: organize your Twido program according to your preferences using section splitting.
- Quickly access the different sections using an explorer, a big help when navigating inside program.

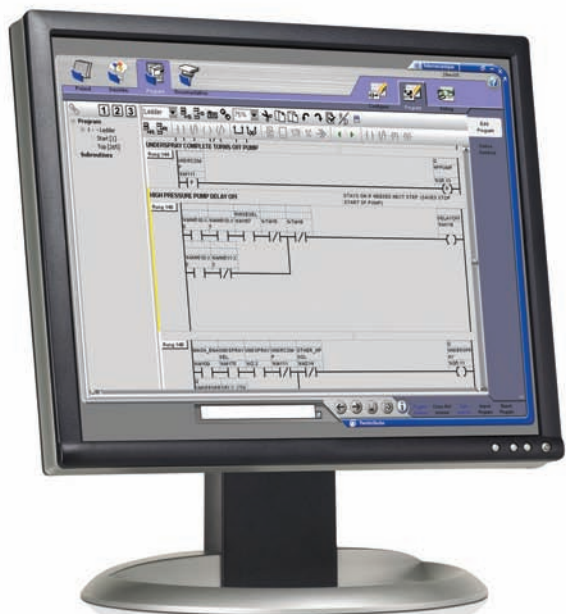


3 Configuration

- Simply configure your data or hardware by selecting from a list of data categorized into 4 object catalogs.

Tip

Save time due to immediate symbolization of I/O.



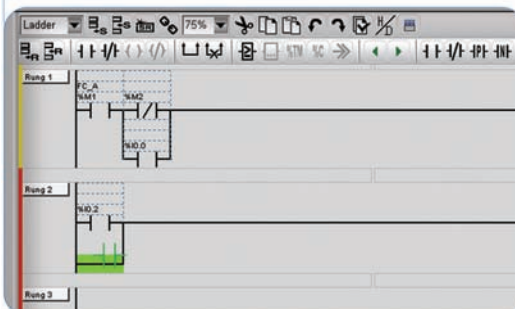
5 Program writing

- LIST or LADDER, select the language suited to each section.

- New LADDER editor for more productivity. Create and modify your program line in record time: trace a link, place coils and contacts where required, the editor does the rest.

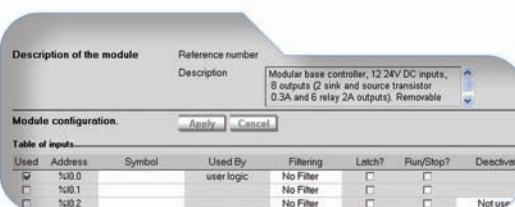
1 New LADDER editor

Never has the creation or modification of a **LADDER** program been so efficient!



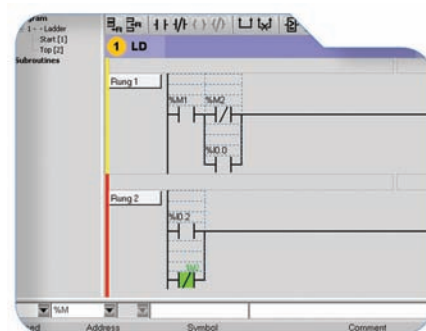
Tip

During a working session, visually follow the modifications carried-out using simple highlighting (yellow or red column).



6 Navigator data

- Avoid errors: locate the appropriate object and simply Drag & Drop its address in the program.



7 Connection

- Simply let yourself be guided: select your connection method to Twido, test the connected equipment, and choose the transfers to be made.
- Gain freedom of movement using a Bluetooth® wireless connection kit.



8 Debug

- Shorten and simplify set-up with the graphic animation of the program, easy on-line modifications, dedicated monitoring screens, and project integrated animation tables.

Tip

Once connection is completed, simply control your Twido from a floating display panel.



9 Project folder creation

- Produce a clear and detailed folder of your project by customizing its contents and page layouts. Verify the results before printing using the preview.

Tip

Generate an html folder and by using Microsoft Word 2000® develop it to create a maintenance manual, operating guide etc.



Test the difference!

This document is a brief outline of the different development phases offered by **TwidoSuite**.

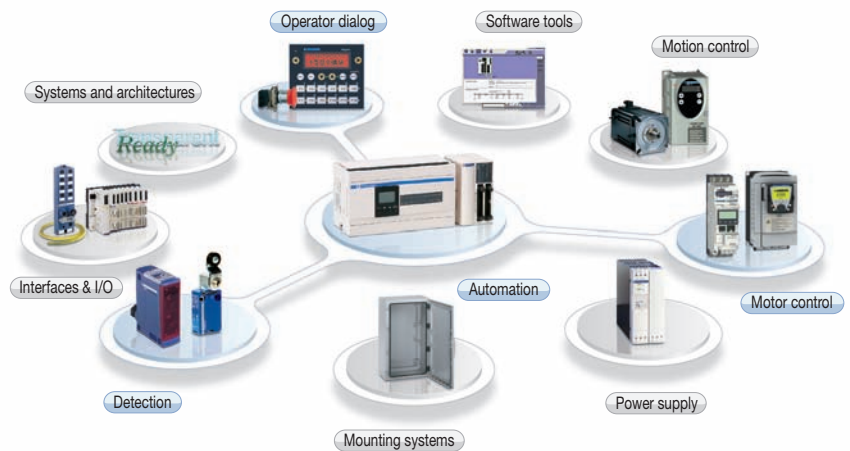
Full information and demonstrations can be found at www.telemecanique.com

Test it and *everything becomes clear!*

| Description | For use with | References |
|-----------------------|---|--------------------------|
| TwidoSuite V1.0 EN/FR | PC running Windows 2000® or XP | TWDBTFU10EF |
| Connecting cables | Twido to USB port of PC Twido to Serial port of PC | TSXPCX3030 TSXPCX1031 |
| Bluetooth® interface | Twido controller | VW3A8114 |
| Bluetooth® gateway | PC not incorporating Bluetooth® | VW3A8115 |

The efficiency of Telemecanique branded *solutions*

Used in combination, Telemecanique products provide quality solutions, meeting all your **Automation & Control** applications requirements.



A **worldwide** presence

Constantly available

- More than 5 000 points of sale in 130 countries.
- You can be sure to find the range of products that are right for you and which complies fully with the standards in the country where they are used.

Technical assistance wherever you are

- Our technicians are at your disposal to assist you in finding the optimum solution for your particular needs.
- Schneider Electric provides you with all necessary technical assistance, throughout the world.



Schneider Electric Industries SAS

Head Office
89, bd Franklin Roosevelt
92506 Rueil-Malmaison Cedex
FRANCE

www.schneider-electric.com
www.telemecanique.com

Owing to changes in standards and equipment, the characteristics given in the text and images in this document are not binding until they have been confirmed with us.

Design: www.blueloft.fr
Photos: Schneider Electric
Print:

Simply Smart!