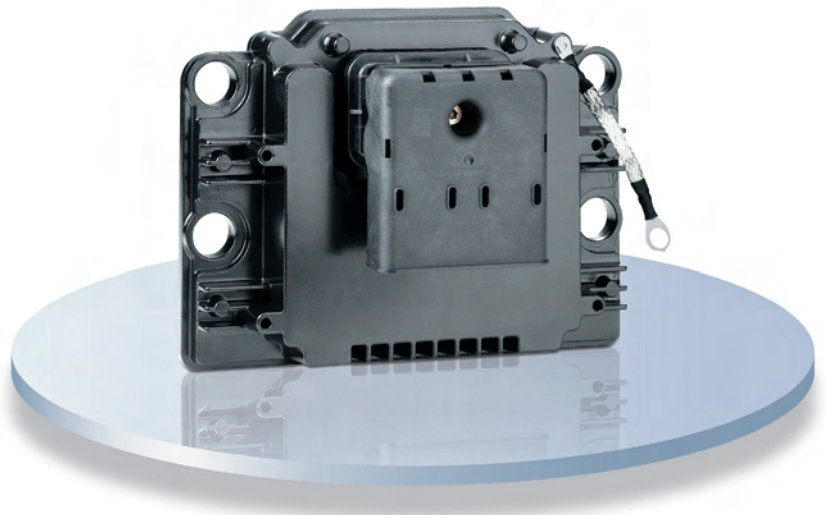


Programmable controller

Twido Extreme

The *all-terrain* controller!

The Twido family is extended by the addition of a new controller named **Twido Extreme** that is specially designed for applications in severe environments and on-board applications of mobile equipment.



Robustness to meet every challenge

High resistance to the detrimental effects of severe environments (climatic, corrosive, mechanical...)

- Excellent resistance to extreme temperatures: -40°C... +110°C
- Efficient protection against
 - overvoltages
 - chemical and abrasive products (corrosion, resistance to fuel oil, machine oils...)
 - humidity: metal enclosure (IP67)
 - vibration and shock
- Reliability of sensors/controllers information transmission due to PWM function (high immunity to interference)

Clear programming

Common to the entire Twido offer, TwidoSuite software simplifies all your operations with the aim of significantly reducing development time.

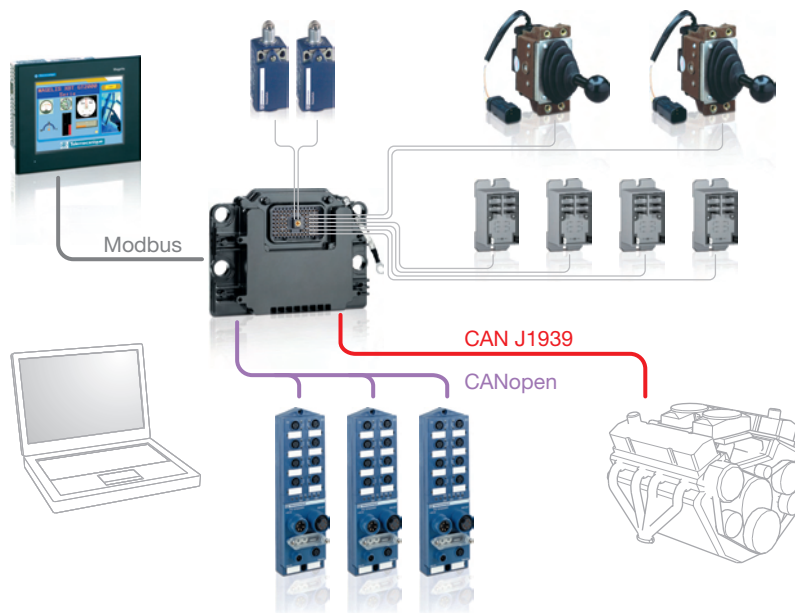
- Modern and simplified interface for improved speed and efficiency (numerous tools and tips offered)
- Software organised according to the development tasks of your project to provide instinctive and very visual navigation
- LIST or LADDER languages (new editor)



Integrated communication

3 communication ports integrated for direct communication with external equipment

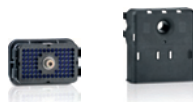
- 1 Modbus serial port
- 1 CANopen port
- 1 CAN J1939 port



Type of base	Twido Extrême
Degree of protection	IP67
Temperature	-40 ... +110°C, storage: -55...+155°C
Relative humidity	90% without condensation
Number of inputs	13 ⁽¹⁾ Discrete / 8 ⁽²⁾ Analogue / 1 PWM
Number of outputs	16 ⁽¹⁾ Discrete / 3 PWM
Supply voltage	12 or 24 VDC
Counting	1 x 10 kHz
Communication ports	RS485, CAN J1939, CANopen master
Serial link protocols	Modbus RTU master/slave, ASCII
Dimensions W x D x H	165,51 x 45,70 x 225
References	TWDLEDCK1

⁽¹⁾ Short-circuit protected

⁽²⁾ Including 1 Input configurable to PWM



Fixing and connection	Fixing kit	70-pin connector	Pre-wired 70-pin connector
Details	4 spacers, 8 washers, 8 shock mounts	80 pins, 80 blanking plugs, 1 cover	Pre-wired with 1.5 m long cable, free wires other end
Degree of protection	-	IP67	IP67
References	TWDXMTK4	TWDFCNK70	TWDFCWK70L015

Separate components	Crimping tool	RJ45 programming connector
Application	Crimping wires onto pins of 70-pin connector	Connecting Twido Extreme to a programming PC
References	TWDXMTCT	TWDNADK70P

Schneider Electric Industries SAS

Head Office
89, bd Franklin Roosevelt
92506 Reuil-Malmaison Cedex
FRANCE

www.schneider-electric.com
www.telemecanique.com

Owing to changes in standards and equipment, the characteristics given in the text and images in this document are not binding until they have been confirmed with us.

Design: www.blueloft.fr

Photos: Schneider Electric

Print:

Simply Smart!