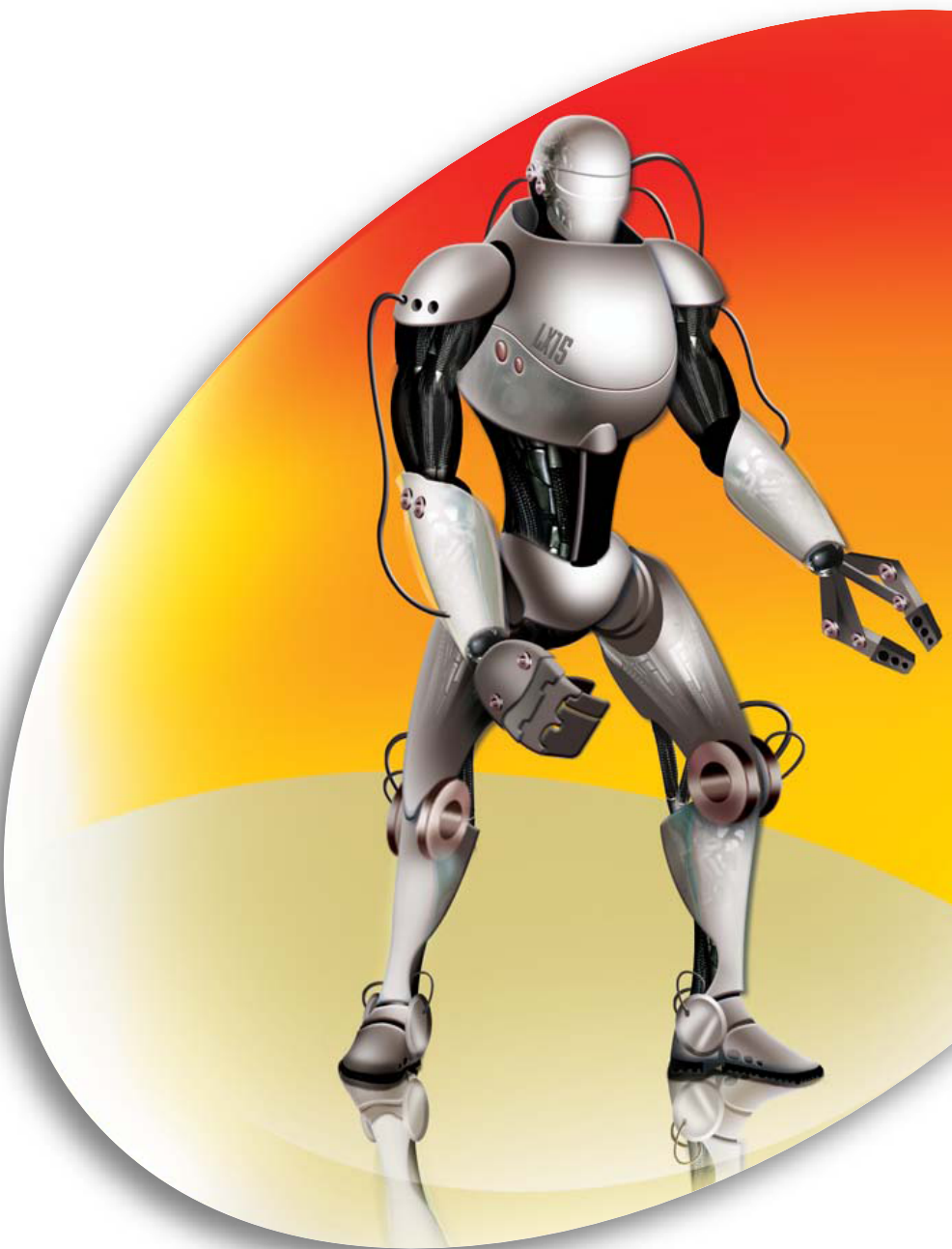
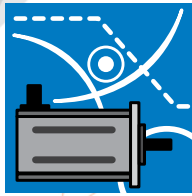


Lexium® 15

Servodrives and servomotors
Perhaps a little too *smart!*



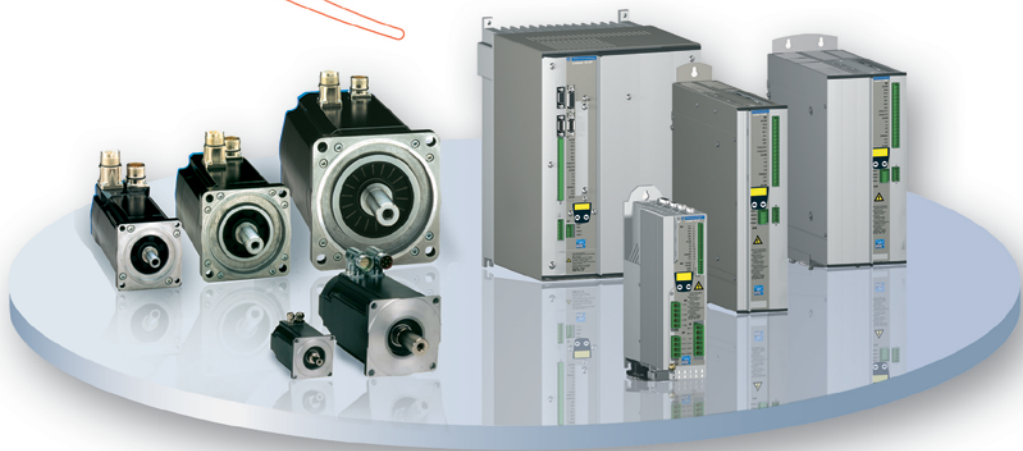
Simply Smart!
Leverage
ingenuity
and intelligence
for **ease of use**



Lexium® 15 Servodrives

Intelligent and **Compact**, the new range of Lexium 15 servo drives simplify your automation architectures.

Its **control** and **precision** capabilities enable you to obtain the best from your machines.



Lexium 15 servo drives are dedicated to the control of torque, speed and position of **BDH** and **BSH** servo motors. These servo drive units are designed for high performance applications, which require strong dynamics and high precision monitoring.

They integrate perfectly in your special or catalog, compact or modular, machines

Be guided by the
choice and performance
of Lexium® 15 Servodrives...

...and concentrate
on what you *master* best...

...your expertise



Lexium® 15 Servodrives

Adaptable

without compromise!

- From 0.9 kW to 42.5 kW.
- 4 configurable logic inputs and 2 configurable logic outputs, extendable using option cards
- 2 analog inputs.
- Integrated position indexer.
- 8 operating modes as standard.
- Integral EMC filter and braking resistors.

Lexium 15, comprising 3 servo drive models, is suited to all your needs.

Lexium 15 Servo Drive LP (Low Power)

- From 0.9 kW to 4.3 kW.
- 1.5 A / 3 A and 6 A on 3-phase 200 V to 480 V.
- 3 A / 6 A and 10 A on 1-phase or 3-phase 230 V.
- 200 programmable motion tasks.

Lexium 15 Servo Drive MP (Medium Power):

- From 5.7 to 11.4 kW.
- 10 A / 14 A and 20 A on 3-phase 200 V to 480 V.
- 180 programmable motion tasks.

Lexium 15 Servo Drive HP (High Power):

- From 22.3 to 42.5 kW.
- 40 A / 70 A on 3-phase 200 V to 480 V.
- 180 programmable motion tasks



With 2 associated servo motor offers, the **Lexium® 15** product range always provides a more dedicated service.

BSH servo motors:

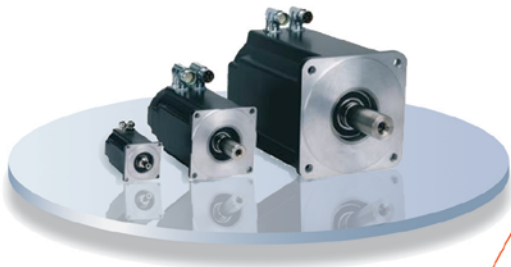
The most dynamic of their generation!



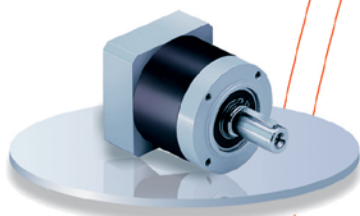
- Nominal speed from 1250 rpm to 8000 rpm.
- Nominal torque from 0.5 Nm to 90 Nm.
- SinCos® high resolution encoder interface (Hiperface®):
 - Single turn,
 - Multiturn (up to 4096 turns).
- Degree of protection IP40 or IP65.
- With or without holding brake.
- Straight or right-angled connectors.
- Smooth or key shaft.

BDH servo motors:

Technology with compactness in mind!



- Nominal speed from 1000 rpm to 8000 rpm.
- Nominal torque from 0.18 Nm to 53 Nm.
- 7 frame sizes.
- Numerous winding variants.
- More than 68 types of motor.
- 3 types of position sensors:
 - Resolver,
 - SinCos® high resolution encoder interface (Hiperface®):
 - Single turn
 - Multiturn (up to 4096 turns).
- Degree of protection IP54 or IP67.
- With or without holding brake.
- Smooth or key shaft.



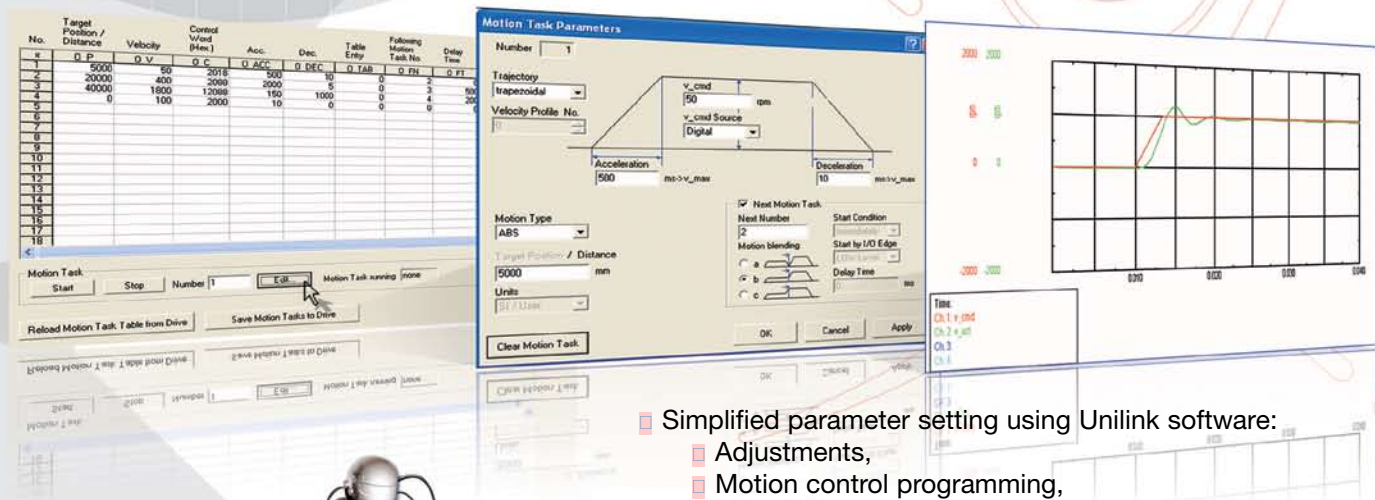
Even more possibilities provided by our **planetary gearbox** offer that is suited to each type of servo motor.

Lexium® 15 Servo Drives

Intelligent

with overall simplicity!

Up to 200 programmable motion tasks:
Simply provide a few parameters and
Lexium 15 servo drive does the rest.



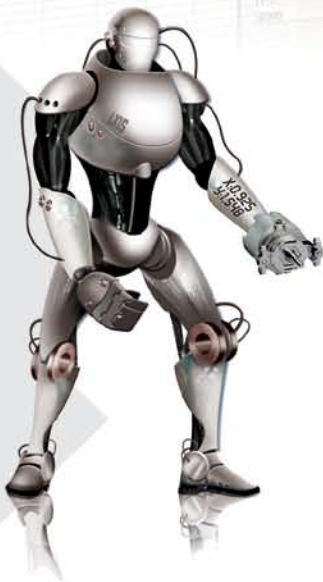
- Simplified parameter setting using Unilink software:
 - Adjustments,
 - Motion control programming,
 - Bode diagram and Oscilloscope.

- Absolute positioning control:
By using the SinCos® encoder there is
no need to reprogram the initial position.

High performance
without add-ons!

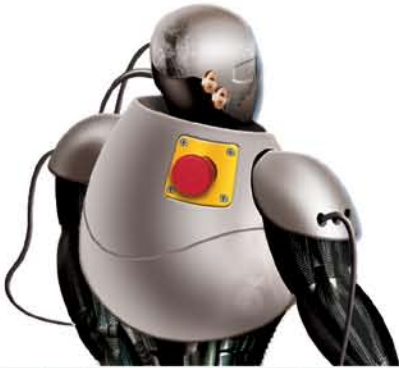
Lexium 15 servo drive integrates
as standard a host of functions:

- Built-in CANopen.
- 8 operating modes:
 - Jogging,
 - Point-to-point,
 - Motion tasks,
 - Electronic gearing,
 - Speed control:
 - Analog,
 - Digital.
 - Torque control:
 - Analog,
 - Digital.
- Multiple interface encoder:
SSI, EnDat®, Hiperface®, Pulse/direction...



Lexium® 15 Servo Drives

Programmed
for *safety!*



- UL and CE certification.
- “Power removal” function: providing immediate stopping and preventing unintentional starting of the servo motor.
- High level of safety incorporated, EN 954-1 category 1 or 3.

And furthermore,
it *communicates!*



- CANopen integrated,
- Profibus DP,
- Modbus® Plus™,
- FIPIO®,
- Sercos®.

Modicon® Premium™ PLC



Connected to a
Modicon® Premium™
PLC, the Lexium® 15
servo drive can be used
in any application field.



Lexium® 15 Servo Drives

Control that is the closest
to your profession!

Coil winding/tension control/cut to length

- Its axes synchronization capabilities increase the performance of your machines.



Automatic assembly

- Its connectivity provides extensive flexibility for integration in your control systems.

Materials handling

- Its wide power range meets all your requirements.



Lexium® 15 Servo Drives

Performance dedicated
to your applications!

Single axis:

- The position indexer integrated in the Lexium 15 servo drive enables, without any add-on, single axis control.



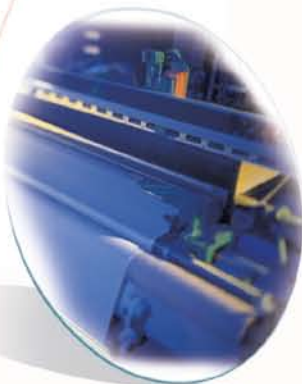
Simple Master/Slave:

- Electronic gearing mode operation synchronizes the motion of several axes.



Advanced Master/Slave:

- The Motion Controller axis card extends the operating possibilities of the Lexium 15 servo drives for applications requiring complex synchronization of several axes.



Coordinated axes:

- The Sercos card option, connected to motion control modules TSX CSY on a Modicon® Premium™ PLC, enables the Lexium 15 servo drive to meet the performance requirements for complex applications (up to 16 axes per module).



Selection guide



Lexium 15 servodrives

	Mo (Nm)	RPMmax	200...240 V 1-phase and 3-phase						208...480V 3-phase			208...480V 3-phase		
			LXM15L						LXM15M			LXM15H		
			D13M3	D21M3	D28M3	D60N4	D10N4	D17N4	D28N4	D40N4	D56N4	C11N4X	C20N4X	
BSH 0551P	0.5	6880	1.4 Nm			1.4 Nm								
0551T	0.5	8000	1.4 Nm											
0552M	0.9	6160				2.25 Nm								
0552P	0.9	8000	2.7 Nm			2.26 Nm								
0552T	0.9	5920	2.54 Nm											
0552M	1.3	4880				3.5 Nm								
0552P	1.3	8000	4.2 Nm				3.87 Nm							
0701P	1.41	8000	2.66 Nm			2.66 Nm								
0701T	1.36	4880	3.19 Nm	3.19 Nm			2.91 Nm							
0702M	2.12	4960				5.63 Nm								
0702P	2.12	8000	5.63 Nm				4.85 Nm							
0702T	2.12	8000		5.45 Nm				4.47 Nm						
0703P	2.83	8000		9.28 Nm				7.71 Nm						
0703T	2.83	8000			7.38 Nm									
1001P	3.39	3780		7.08 Nm			6.19 Nm							
1001T	3.39	6000			8.5 Nm									
1002P	5.52	6000		14.79 Nm				12.13 Nm						
1002T	5.52	5340			11.59 Nm									
1003M	7.76	2640					15.19 Nm	22.95 Nm						
1003P	7.76	6000			19.69 Nm				19.69 Nm	23.17 Nm				
1004M	9.31	2400					19.8 Nm	29.87 Nm		34.17 Nm				
1004P	9.31	4800							25.7 Nm	33.83 Nm				
1004T	9.31	4080								21.04 Nm				
1401M	11.4	2360							26 Nm					
1401P	11.4	4000							23.33 Nm	23.33 Nm				
1401T	11.4	3920									23.33 Nm			
1402M	19.2	2360								47.5 Nm				
1402P	19.2	4000								39.33 Nm	47.5 Nm			
1403M	25.4	2200								71.67 Nm				
1403P	25.4	4000									57.32 Nm			
1404M	32.1	2040								82.32 Nm	95 Nm			
2051M	36	2200								68.33 Nm	68.33 Nm	68.33 Nm		
2051P	36	3500										82 Nm		
2051T	36	3724										69.95 Nm	82 Nm	
2052M	65	2190										200 Nm	200 Nm	
2052P	65	3000										118.54 Nm	193.45 Nm	
2053M	90	2190										227.18 Nm	300 Nm	
2052P	90	3000											202.96 Nm	



1.4 Nm = Value in Nm corresponding to the peak stall torque of the servodrive-motor combination

RPMmax = Maximum speed

Mo = Nominal stall torque in Nm



Selection guide

Lexium 15 servodrives

	Mo (Nm)	RPMmax	200...240 V 1-phase and 3-phase						208...480V 3-phase		
			LXM15L						LXM15M		
			D13M3	D21M3	D28M3	D60N4	D10N4	D17N4	D28N4	D40N4	D56N4
BDH 0401B	0.18	8000	0.61 Nm								
0402C	0.31	8000	1.08 Nm								
0403C	0.41	8000	1.46 Nm								
0582C	0.84	8000				2.34 Nm					
0582E	0.87	8000	2.42 Nm								
0583C	1.13	8000				3.2 Nm					
0583D	1.16	6540	3.58 Nm				3.58 Nm				
0583F	1.18	8000		3.52 Nm							
0584C	1.38	8000				3.94 Nm					
0584D	1.41	5420	4.4 Nm				4.4 Nm				
0584F	1.42	8000		4.46 Nm							
0701C	1.15	8000				3.34 Nm					
0701E	1.2	8000	3.24 Nm								
0702C	2.0	8000				5.74 Nm					
0702D	2.04	3750	6.51 Nm				6.51 Nm				
0702H	2.1	8000		5.36 Nm							
0703C	2.71	8000				7.83 Nm					
0703E	2.79	3140	8.55 Nm				8.55 Nm				
0703H	2.88	6630		7.35 Nm							
0841C	1.95	6630				5.12 Nm					
0841E	2.02	6630	5.33 Nm				5.13 Nm				
0841H	2.06	6630		4.78 Nm							
0842C	3.35	6630				9.37 Nm					
0842E	3.42	6630	9.72 Nm				9.41 Nm				
0842G	3.53	6630		9.56 Nm				8.66 Nm			
0842J	3.56	6630			7.56 Nm				7.56 Nm		
0843E	4.7	6630					11.7 Nm				
0843G	4.8	6630		13.2 Nm				11.68 Nm			
0843K	4.9	6630			9.02 Nm				9.02 Nm		
0844E	5.76	6630					14.1 Nm				
0844G	5.88	6630		16.1 Nm				13.97 Nm			
0844J	6.0	6630			12.18 Nm				12.18 Nm		
1081E	4.7	4010					10.71 Nm				
1081G	4.75	6000		10.82 Nm				10.82 Nm			
1081K	4.9	6000			9.22 Nm				9.22 Nm		
1082E	8.34	2470					18.08 Nm				
1082G	8.43	3840		19.51 Nm				19.51 Nm			
1082K	8.6	3840			16.9 Nm				16.9 Nm		
1082M	8.6	3000								16.7 Nm	
1083G	11.4	2880						25.8 Nm			
1083K	11.6	2880			22.9 Nm				22.9 Nm		
1083M	11.4	2000								22.1 Nm	
1083P	11.4	3000									22.2 Nm
1084G	14.3	2390						31.7 Nm			
1084K	14.4	4000			28.1 Nm				28.1 Nm		
1084L	14.1	4000								27.28 Nm	
1084N	14.1	4000									25.5 Nm
1382G	11.9	1860						25.6 Nm			
1382K	12.2	4500			22.7 Nm				22.7 Nm		
1382M	12.2	4500								22.8 Nm	
1382P	12.3	4500									23.2 Nm
1383G	16.5	1860						38.4 Nm			
1383K	16.8	3500			31 Nm				31 Nm		
1383M	17	3500								31.4 Nm	
1383N	17	4500									34.8 Nm
1384K	20.8	2500							41.2 Nm		
1384L	21	2500								41.9 Nm	
1384P	20.4	3500									40.2 Nm
1385K	24.8	2200							46.8 Nm		
1385M	25	2200								47.6 Nm	
1385N	24.3	3000									50.2 Nm
1882K	29.7	1800							59.4 Nm		
1882M	30	1800								59.8 Nm	
1882P	29.4	2500									58.4 Nm
1883M	42	3500								80.7 Nm	
1883P	41.6	1800									79.4 Nm
1884L	53	2800								108 Nm	
1884P	52.5	1400									106 Nm

1.4 Nm = Value in Nm corresponding to the peak stall torque of the servdrive-motor combination

RPMmax = Maximum speed

Mo = Nominal stall torque in Nm

The efficiency of Telemecanique® branded *solutions*

Used in combination, Telemecanique products provide quality solutions, meeting all your **Automation & Control** applications requirements.



A worldwide presence

Constantly available

- More than 5000 points of sale in 190 countries.
- You can be sure to find the range of products that are right for you and which complies fully with the standards in the country where they are used.

Technical assistance wherever you are

- Our technicians are at your disposal to assist you in finding the optimum solution for your particular needs.
- Schneider Electric provides you with all necessary technical assistance, throughout the world.



Schneider Electric Motion

motion@us.schneider-electric.com

www.us.schneider-electric.com

Owing to changes in standards and equipment, the characteristics given in the text and images in this document are not binding until they have been confirmed with us.

Design: Pema-Cohérents

Photos: Schneider Electric

Simply Smart!

Copyright © 2006 Schneider Electric. All Rights Reserved.
Lexium, Telemecanique, Modbus, Modicon and FIPIO are registered trademarks, and Premium and Plus are trademarks, of Schneider Electric. Other trademarks used herein are the property of their respective owners.