

Q170MCPU

Standalone Motion Controller

Mission Control for Motion

Everything in a single, cost effective package



SELF
CONTAINED 

Run up to 16 axes plus PLC control from a standalone, compact unit

FLEXIBLE
DESIGN 

Easily add System Q I/O for additional capabilities

SCALABLE
SOLUTION 

Choose motors from 100 W up to 55 kW

RELIABLE 

Noise immune optical fibre amplifier control

A one stop shop



Comprehensive motion solutions from a single box

Fully integrated

The Q170M offers the ability to provide a complete automation solution with a single, compact device. Its main strength is the ability to control up to 16 axes over a single SSCNET connection. However, rather than just being a simple motion controller, a comprehensive PLC capability is also built in. Hence the Q170M offers the ability to address a range of applications such as more sophisticated packaging machinery, labeling and material handling applications.



Seamless integration in a single, compact device

Cost effective

There are no hidden extras with the Q170M's design. As standard features, the device's connectivity directly controls up to 16 MR-J3-B amplifiers via SSCNET III with no intermediate hardware. A reliable, noise free "daisy chain" optical fibre links the amplifiers, keeping costs low while improving machine availability. The unit is no larger than an average servo amplifier, reducing panel space and costs further.



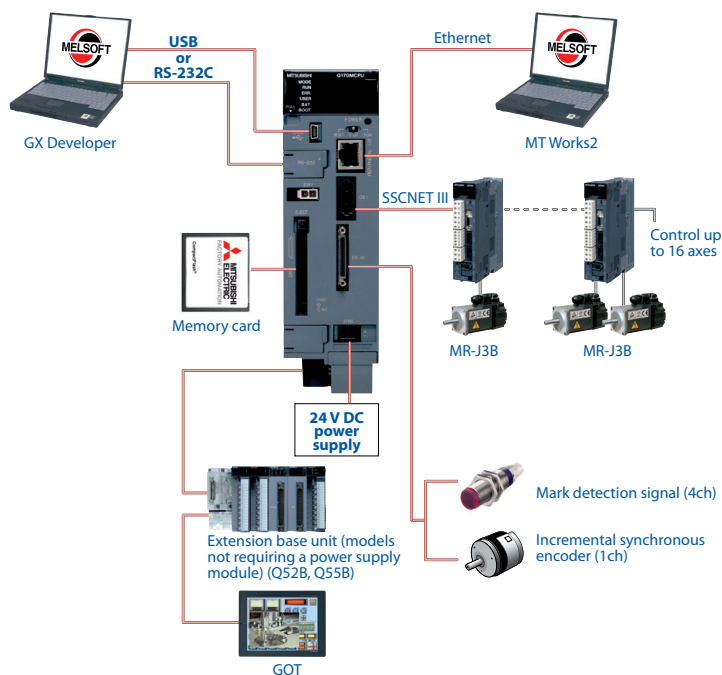
Avoid costly amplifier cabling with SSCNET III

Productivity

By using a single integrated controller that handles both motion and PLC control, machine operation in general benefits. The Q170M insures rapid production throughput with a high speed processor that executes up to four times faster than previous Mitsubishi designs. Hence a machine can realise higher productivity with the existing mechanical design and servos by just changing the controller. At the design stage, engineering work is simplified and reduced by using a single integrated controller, rather than making two separate devices work together.

Connectivity

The built in SSCNET connection makes for simple, cost effective communication with servo amplifiers. However, the Q170M also offers a range of other connectivity benefits. Key amongst these is the ability to connect a synchronous encoder, allowing the controller to follow and synchronize its own axes with an external one. This is particularly beneficial for applications such as labeling when combined with the built-in mark detection function. The unit also offers built-in connections to Ethernet and USB for rapid system development. Support for the MC Protocol provides additional choices for communicating to third party devices. Finally, a System Q bus interface means that it is simple to connect a standard extension base unit for the use of System Q I/O modules.



Connection flexibility to meet all application needs

Flexibility

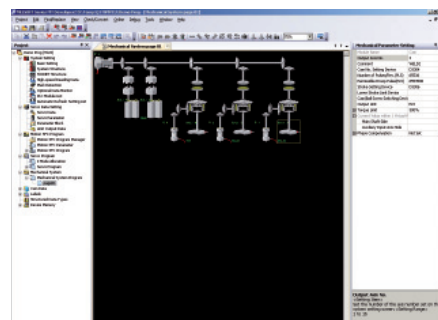
Most motion systems offer sophisticated axis control functions. However, the Q170M also opens up a huge range of PLC application possibilities by being compatible with over 100 of the System Q I/O modules. This means application challenges such as analogue I/O, high density digital I/O, networking and others can easily be tackled by the Q170M. For companies already using System Q, spare parts will be common to their other systems, reducing cost and administration tasks.



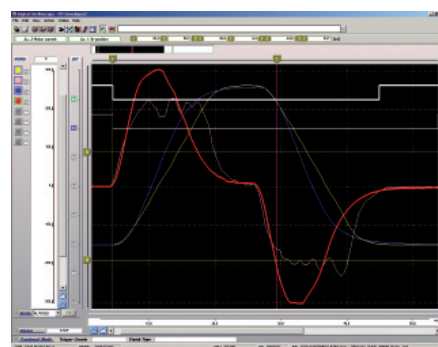
Choose from over 100 System Q I/O modules

Development

A range of options exist for the rapid and efficient development of motion and PLC programs. MT Developer 2 is Mitsubishi's standard motion development platform and incorporates the innovative mechanical support language that allows systems to be described in terms of their equivalent mechanical components, rather than abstract programming terms. The software also offers cam profile design and built in diagnostics, such as a digital oscilloscope. For PLC development, our standard GX IEC Developer package is available, providing an industry accepted IEC 61131 programming environment.



Mechanical support language allows systems to be described with familiar mechanical components



A digital oscilloscope allows system problems to be found quickly

Specifications ///

Item	Specification
Power Supply	24V DC +/-10%, ripple ratio 5% or less
Mass [kg]	0.9
Dimensions [mm]	178 (H) x 52 (W) x 135 (D)
Digital Inputs (Mark detection)	4
Digital Outputs	2
Synchronous Encoder	<ul style="list-style-type: none">• A/B-phase pulse train• Open-collector-type: up to 800kpps, up to 10m• Differential-type: up to 1Mpps, up to 30m
Interfaces	100/10Mbps Ethernet, USB, RS232
Connectable servo amplifier	MR-J3-B servo amplifiers over SSCNET III (Rotational, Linear and Fully closed loop compatible)
Compatible extension base unit	Q52B/Q55B
Compatible motion modules	Q172DLX/Q172DEX/Q173DPX
Memory back up	Q6BAT (included with Q170MCPU)

Motion control specifications

Item	Specification
Number of control axes	Up to 16
Operation Cycle - SV13 OS (SW8DNC-SV13QG)	0.44ms / 1 to 6 axes 0.88ms / 7 to 16 axes
Operation Cycle - SV22 OS (SW8DNC-SV22QF)	0.44ms / 1 to 4 axes 0.88ms / 5 to 12 axes 1.77ms / 13 to 16 axes
Interpolation functions	Linear interpolation (Up to 4 axes), Circular interpolation (2 axes), Helical interpolation (3 axes)
Control modes	PTP (Point to Point) control, Speed control, Speed-position control, Fixed- pitch feed, Constant speed control, Position follow-up control, Speed control with fixed position stop, Speed switching control, High-speed oscillation control, Synchronous control (SV22)
CAM function	<ul style="list-style-type: none">• Up to 256 CAM profiles can be stored internally• Resolution per cycle 256, 512, 1024, 2048 points<ul style="list-style-type: none">• Stroke resolution 32767• Two-way CAM and Feed CAM
Programming language	Motion SFC, Dedicated instruction, Mechanical support language (SV22)

PLC control specification

Item	Specification
Processing speed (sequence instruction)	LD instruction: 0.02 µs MOV instruction: 0.04 µs
Program capacity	20Ksteps (80Kbyte)
Programming language	Ladder, IL, SFC, ST, MELSAP-L (IEC61131-3 programming compatible)

EUROPEAN BRANCHES

MITSUBISHI ELECTRIC EUROPE B.V. D-40880 Ratingen Phone: +49 (0)2102 / 486-0	GERMANY
MITSUBISHI ELECTRIC EUROPE B.V. Radlická 714/113a CZ-158 00 Praha 5 Phone: +420 - 251 551 470	CZECH REPUBLIC
MITSUBISHI ELECTRIC EUROPE B.V. 25, Boulevard des Bouvets F-92741 Nanterre Cedex Phone: +33 (0)1 / 55 68 55 68	FRANCE
MITSUBISHI ELECTRIC EUROPE B.V. Viale Colleoni 7 I-20041 Agrate Brianza (MB) Phone: +39 039 / 60 53 1	ITALY
MITSUBISHI ELECTRIC EUROPE B.V. Krakowska 50 PL-32-083 Balice Phone: +48 (0)12 / 630 47 00	POLAND
MITSUBISHI ELECTRIC EUROPE B.V. Carretera de Rubí 76-80 E-08190 Sant Cugat del Vallés (Barcelona) Phone: 902 331121 // +34 935653131	SPAIN
MITSUBISHI ELECTRIC EUROPE B.V. Travellers Lane UK-Hatfield, Herts. AL10 8XB Phone: +44 (0)1707 / 27 61 00	UK

EUROPEAN REPRESENTATIVES

Wiener Straße 89 AT-2500 Baden Phone: +43 (0)2252 / 85 55 20	AUSTRIA	AutoCont C.S. s.r.o. Technologická 374/6 CZ-708 00 Ostrava-Pustkovec Phone: +420 595 691 150	CZECH REPUBLIC	KAZPROMAUTOM. Ltd. Mustafina Str. 7/2 KAZ-470046 Karaganda Phone: +7 7212 / 50 11 50	KAZAKHSTAN	Beijer Electronics AS Postboks 487 NO-3002 Drammen Phone: +47 (0)32 / 24 30 00	NORWAY	Beijer Electronics AB Box 426 SE-20124 Malmö Phone: +46 (0)40 / 35 86 00	SWEDEN	TEXEL ELECTRONICS Ltd. 2 Ha 'umanut, P.O.B. 6272 IL-42160 Netanya Phone: +972 (0)9 / 863 39 80	ISRAEL
TEHNIKON Oktyabrskaya 16/5, Off. 703-711 BY-220030 Minsk Phone: +375 (0)17 / 210 46 26	BELARUS	B-ELECTRIC s.r.o. Mladoboleslavská 812 CZ-197 00 Praha 19 - Kbely Phone: +420 286 850 848	CZECH REPUBLIC	Beijer Electronics SIA Vestienas iela 2 LV-1035 Riga Phone: +371 (0)784 / 2280	LATVIA	Sirius Trading & Services Alcea Lacul Morii Nr. 3 RO-060841 Bucuresti, Sector 6 Phone: +40 (0)21 / 430 40 06	ROMANIA	Econotec AG Hinterdorfstr. 12 CH-8309 Nürensdorf Phone: +41 (0)44 / 838 48 11	SWITZERLAND	CEG INTERNATIONAL Gebaco Center/Block A Autostrade DORA Lebanon - Beirut Phone: +961 (0)1 / 240 430	LEBANON
ESCO D & A Culliganlaan 3 BE-1831 Diegem Phone: +32 (0)2 / 717 64 30	BELGIUM	Beijer Electronics A/S Lykkegårdsvej 17, 1. DK-4000 Roskilde Phone: +45 (0)46 / 75 76 66	DENMARK	Beijer Electronics UAB Savanoriu Pr. 187 LT-02300 Vilnius Phone: +370 (0)5 / 232 3101	LITHUANIA	Craft Con. & Engineering d.o.o. Bulevar Svetog Cara Konstantina 80-86 SER-18106 Nis Phone: +381 (0)18 / 292-24-4/5	SERBIA	GTS Bayraktar Bulvari Nutuk Sok. No:5 TR-34775 Yukari ISTANBUL Phone: +90 (0)216 526 39 90	TURKEY	CEI Ltd. Private Bag 2016 ZA-1600 Isando Phone: + 27 (0)11 / 977 0770	SOUTH AFRICA
Koning & Hartman b.v. Woluwelaan 31 BE-1800 Vilvoorde Phone: +32 (0)2 / 257 02 40	BELGIUM	Beijer Electronics Eesti OÜ Pärnu mnt.1601 EE-11317 Tallinn Phone: +372 (0)6 / 51 81 40	ESTONIA	ALFATRADE Ltd. 99, Paola Hill Malta- Paola PLA 1702 Phone: +356 (0)21 / 697 816	MALTA	INEA SR d.o.o. Izletnicka 10 SER-113000 Smederevo Phone: +381 (0)26 / 617 163	SERBIA	CSC Automation Ltd. 4-8, M. Raskovoyi St. UA-02660 Kiev Phone: +380 (0)44 / 494 33 55	UKRAINE	ILAN & GAVISH Ltd. 24 Shenkar St., Kiryat Arie IL-49001 Petah-Tiqva Phone: +972 (0)3 / 922 18 24	ISRAEL
INEA BH d.o.o. Aleja Lipa 56 BA-71000 Sarajevo Phone: +387 (0)33 / 921 164	BOSNIA AND HERZEG.	Beijer Electronics OY Jaakonkatu 2 FIN-01620 Vantaa Phone: +358 (0)207 / 463 500	FINLAND	INTERHIS srl bld. Traian 23/1 MD-2060 Kishinev Phone: +373 (0)22 / 66 4242	MOLDOVA	AutoCont Control s.r.o. Radlinského 47 SK-02601 Dolny Kubin Phone: +421 (0)43 / 5868210	SLOVAKIA	CS Mitrade Slovensko, s.r.o. Vajanského 58 SK-92101 Piestany Phone: +421 (0)33 / 7742 760	SLOVAKIA	INEA d.o.o. Stegne 11 SI-1000 Ljubljana Phone: +386 (0)1 / 513 8100	SLOVENIA
AKHNATON 4 Andrej Ljapchev Blvd. Pb 21 BG-1756 Sofia Phone: +359 (0)2 / 817 6004	BULGARIA	UTECO A.B.E.E. S, Mavrogenous Str. GR-18542 Piraeus Phone: +30 211 / 1206 900	GREECE	HIFLEX AUTOM. B.V. Wolverveerstraat 22 NL-2984 CD Ridderkerk Phone: +31 (0)180 - 46 60 04	NETHERLANDS	Koning & Hartman b.v. Haarlerbergweg 21-23 NL-1101 CH Amsterdam Phone: +31 (0)20 / 587 76 00	NETHERLANDS				
INEA CR d.o.o. Losinjka 4 a HU-10000 Zagreb Phone: +385 (0)1 / 36940 -01/-02/-03	CROATIA	MELTRADE Ltd. Fertő utca 14. HU-1107 Budapest Phone: +36 (0)1 / 431-9726	HUNGARY								

